

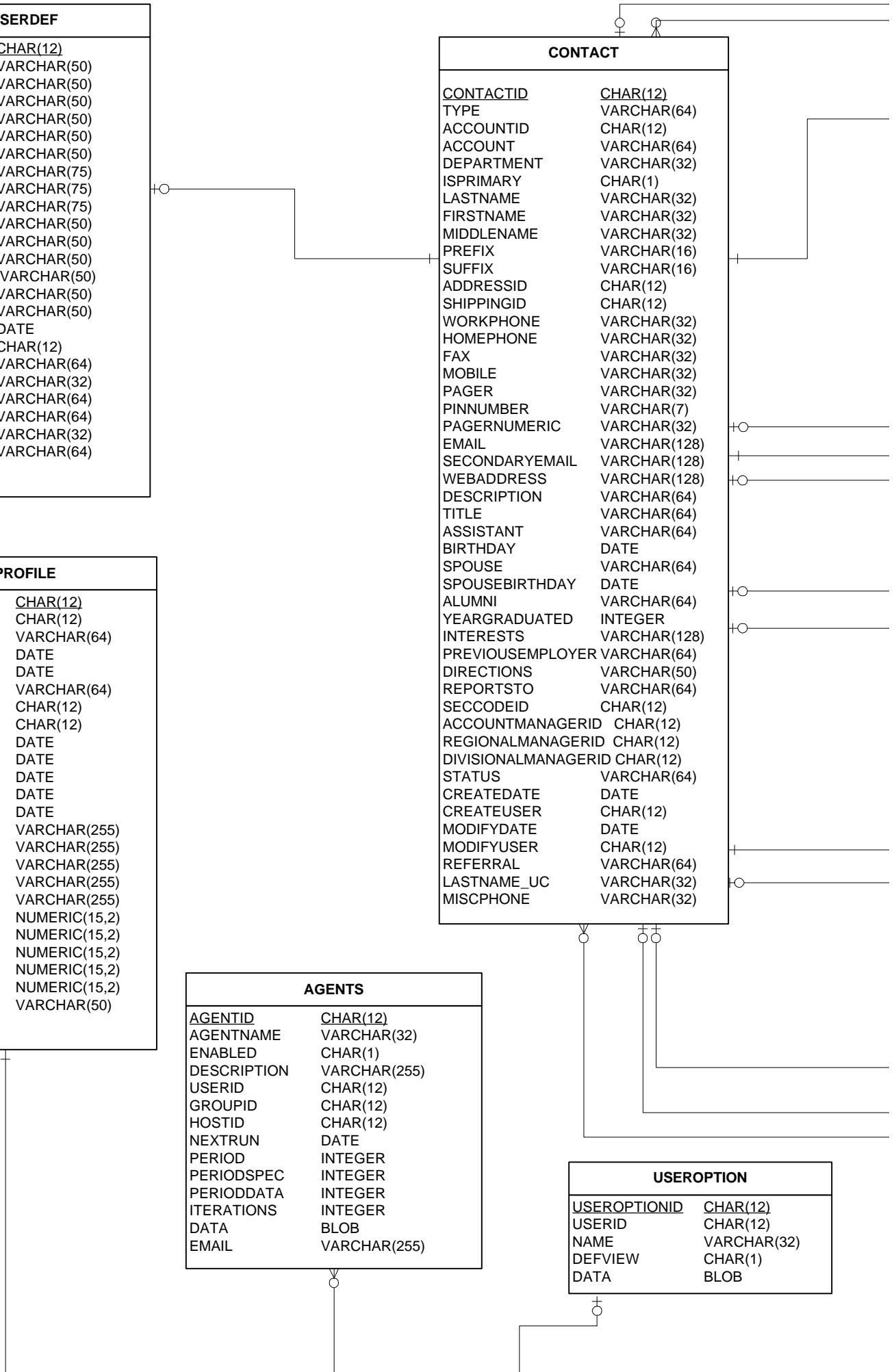
ACT_USERDEF	
<u>CONTACTID</u>	CHAR(12)
USER1	VARCHAR(50)
USER2	VARCHAR(50)
USER3	VARCHAR(50)
USER4	VARCHAR(50)
USER5	VARCHAR(50)
USER6	VARCHAR(50)
USER7	VARCHAR(75)
USER8	VARCHAR(75)
USER9	VARCHAR(75)
USER10	VARCHAR(50)
USER11	VARCHAR(50)
USER12	VARCHAR(50)
USER13	VARCHAR(50)
USER14	VARCHAR(50)
USER15	VARCHAR(50)
CREATEDATE	DATE
CREATEUSER	CHAR(12)
ALT1_CONT	VARCHAR(64)
ALT1_PHONE	VARCHAR(32)
ALT1_TITL	VARCHAR(64)
ALT2_CONT	VARCHAR(64)
ALT2_PHONE	VARCHAR(32)
ALT2_TITL	VARCHAR(64)

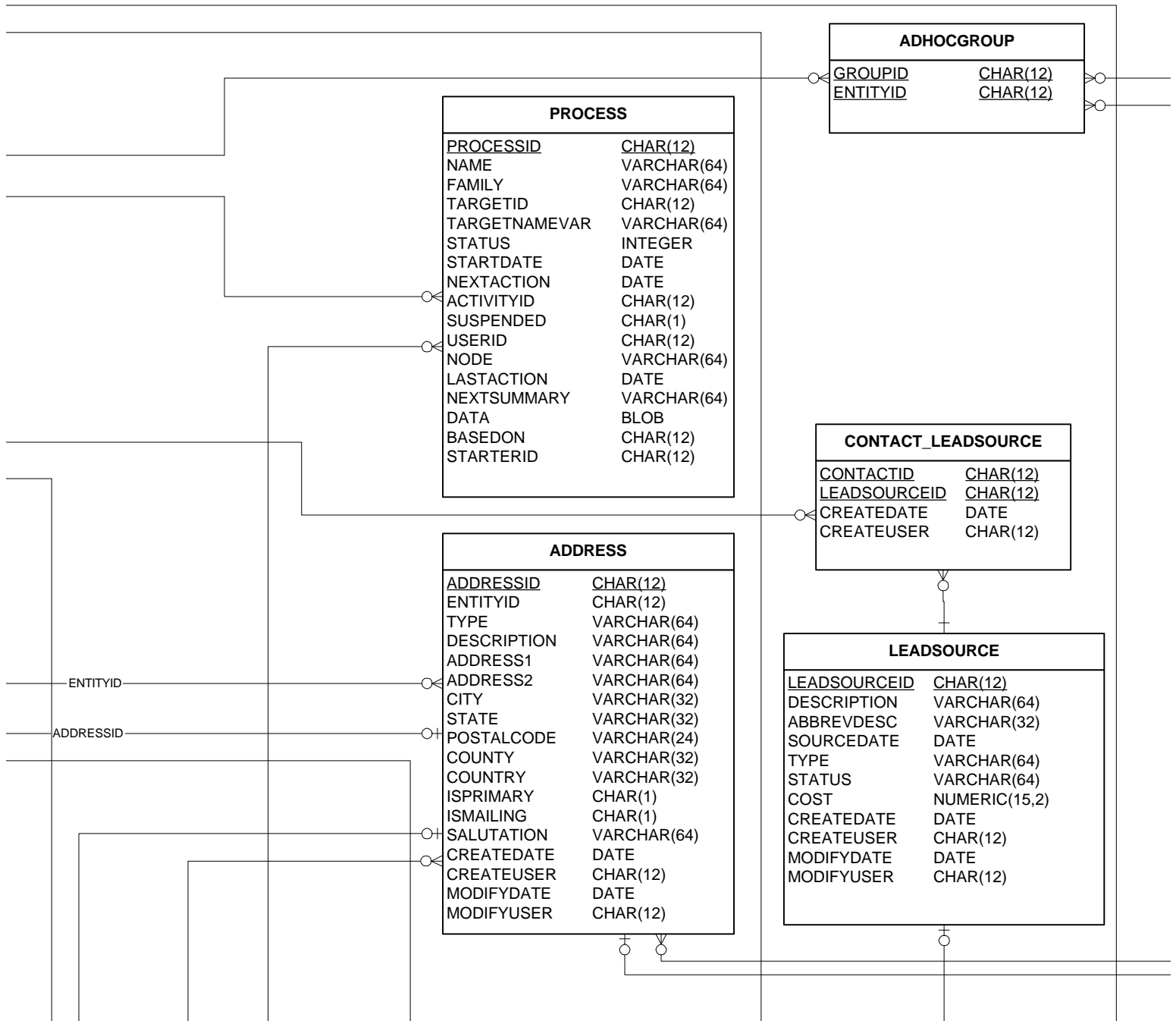
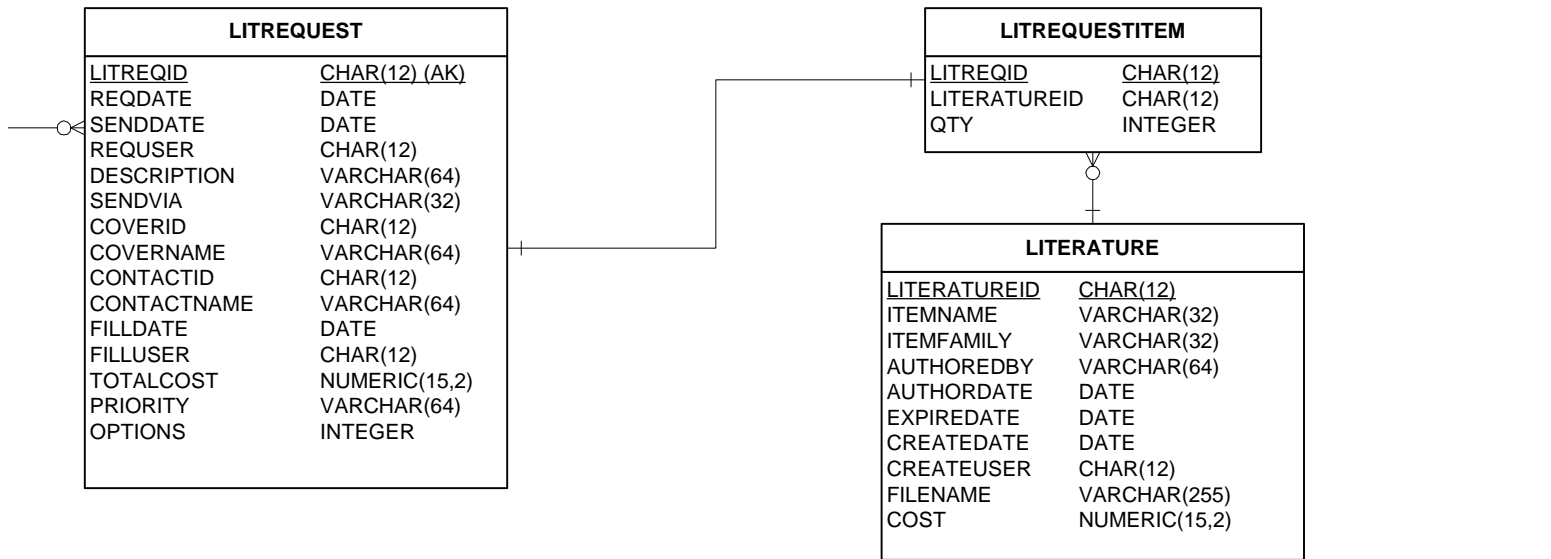
CONTACT	
<u>CONTACTID</u>	CHAR(12)
TYPE	VARCHAR(64)
ACCOUNTID	CHAR(12)
ACCOUNT	VARCHAR(64)
DEPARTMENT	VARCHAR(32)
ISPRIMARY	CHAR(1)
LASTNAME	VARCHAR(32)
FIRSTNAME	VARCHAR(32)
MIDDLENAME	VARCHAR(32)
PREFIX	VARCHAR(16)
SUFFIX	VARCHAR(16)
ADDRESSID	CHAR(12)
SHIPPINGID	CHAR(12)
WORKPHONE	VARCHAR(32)
HOMEPHONE	VARCHAR(32)
FAX	VARCHAR(32)
MOBILE	VARCHAR(32)
PAGER	VARCHAR(32)
PINNUMBER	VARCHAR(7)
PAGERNUMERIC	VARCHAR(32)
EMAIL	VARCHAR(128)
SECONDARYEMAIL	VARCHAR(128)
WEBADDRESS	VARCHAR(128)
DESCRIPTION	VARCHAR(64)
TITLE	VARCHAR(64)
ASSISTANT	VARCHAR(64)
BIRTHDAY	DATE
SPOUSE	VARCHAR(64)
SPOUSEBIRTHDAY	DATE
ALUMNI	VARCHAR(64)
YEARGRADUATED	INTEGER
INTERESTS	VARCHAR(128)
PREVIOUSEMPLOYER	VARCHAR(64)
DIRECTIONS	VARCHAR(50)
REPORTSTO	VARCHAR(64)
SECCODEID	CHAR(12)
ACCOUNTMANAGERID	CHAR(12)
REGIONALMANAGERID	CHAR(12)
DIVISIONALMANAGERID	CHAR(12)
STATUS	VARCHAR(64)
CREATEDATE	DATE
CREATEUSER	CHAR(12)
MODIFYDATE	DATE
MODIFYUSER	CHAR(12)
REFERRAL	VARCHAR(64)
LASTNAME_UC	VARCHAR(32)
MISCPHONE	VARCHAR(32)

USERPROFILE	
<u>USERID</u>	CHAR(12)
ASSETID	CHAR(12)
ASSETDESC	VARCHAR(64)
HIREDATE	DATE
BIRTHDATE	DATE
SPOUSE	VARCHAR(64)
SSN	CHAR(12)
EMPLOYEEENUMBER	CHAR(12)
USERDATE1	DATE
USERDATE2	DATE
USERDATE3	DATE
USERDATE4	DATE
USERDATE5	DATE
USERTXT1	VARCHAR(255)
USERTXT2	VARCHAR(255)
USERTXT3	VARCHAR(255)
USERTXT4	VARCHAR(255)
USERTXT5	VARCHAR(255)
USERNUM1	NUMERIC(15,2)
USERNUM2	NUMERIC(15,2)
USERNUM3	NUMERIC(15,2)
USERNUM4	NUMERIC(15,2)
USERNUM5	NUMERIC(15,2)
NOTES	VARCHAR(50)

AGENTS	
<u>AGENTID</u>	CHAR(12)
AGENTNAME	VARCHAR(32)
ENABLED	CHAR(1)
DESCRIPTION	VARCHAR(255)
USERID	CHAR(12)
GROUPID	CHAR(12)
HOSTID	CHAR(12)
NEXTRUN	DATE
PERIOD	INTEGER
PERIODSPEC	INTEGER
PERIODDATA	INTEGER
ITERATIONS	INTEGER
DATA	BLOB
EMAIL	VARCHAR(255)

USEROPTION	
<u>USEROPTIONID</u>	CHAR(12)
USERID	CHAR(12)
NAME	VARCHAR(32)
DEFVIEW	CHAR(1)
DATA	BLOB



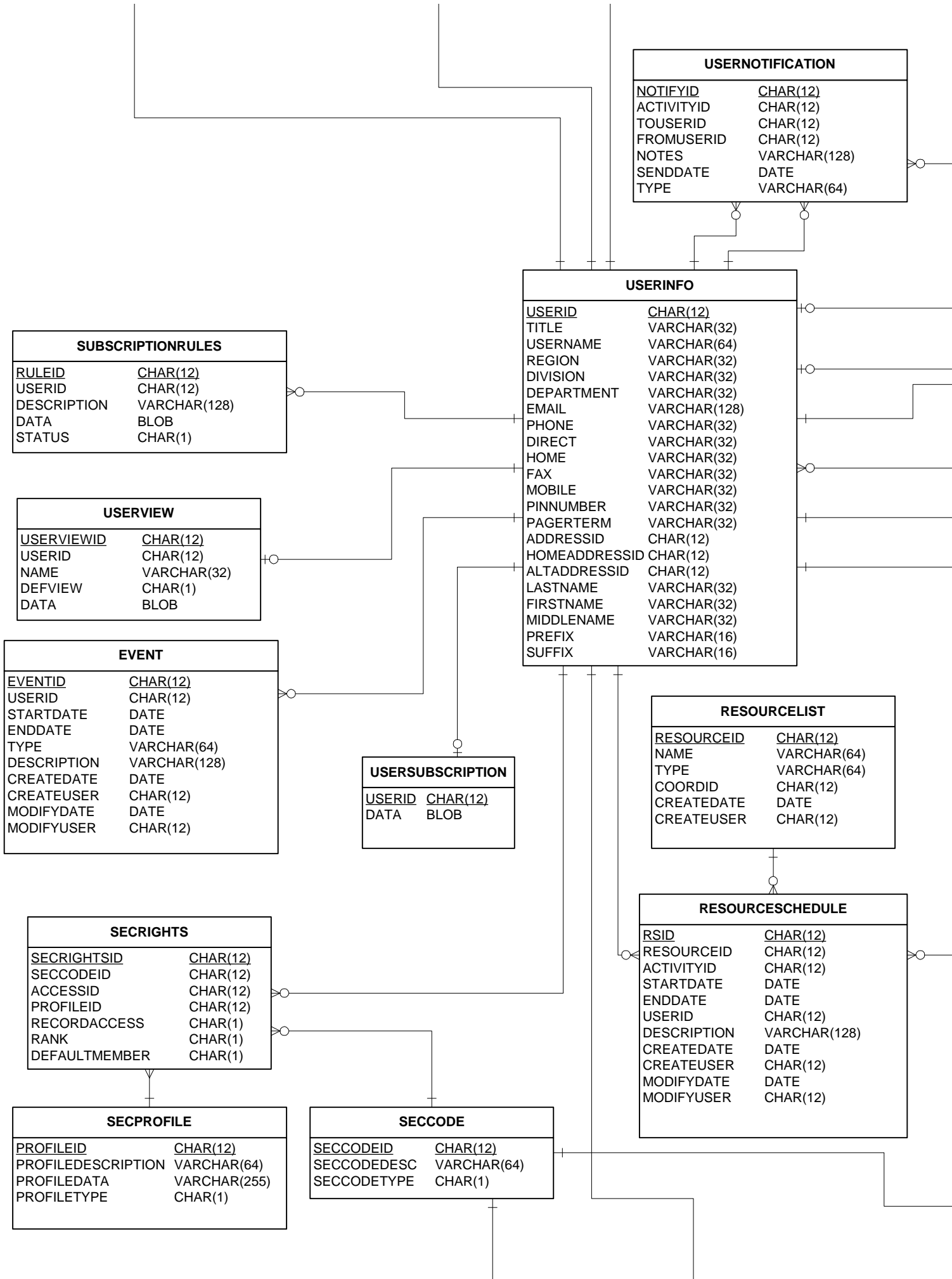


ASSOCIATION	
<u>ASSOCIATIONID</u>	CHAR(12)
ACCOUNTASSOCIATION	CHAR(1)
FROMID	CHAR(12)
TOID	CHAR(12)
FORWARDRELATION	VARCHAR(64)
BACKRELATION	VARCHAR(64)
FORWARDNOTES	VARCHAR(128)
BACKNOTES	VARCHAR(128)
CREATEDATE	DATE
CREATEUSER	CHAR(12)
MODIFYDATE	DATE
MODIFYUSER	CHAR(12)

ACCOUNT	
<u>ACCOUNTID</u>	CHAR(12)
TYPE	VARCHAR(64)
ACCOUNT	VARCHAR(64)
DIVISION	VARCHAR(64)
SICCODE	VARCHAR(64)
PARENTID	CHAR(12)
DESCRIPTION	VARCHAR(64)
ADDRESSID	CHAR(12)
SHIPPINGID	CHAR(12)
REGION	VARCHAR(64)
MAINPHONE	VARCHAR(32)
ALTERNATEPHONE	VARCHAR(32)
FAX	VARCHAR(32)
TOLLFREE	VARCHAR(32)
TOLLFREE2	VARCHAR(32)
OTHERPHONE1	VARCHAR(32)
OTHERPHONE2	VARCHAR(32)
OTHERPHONE3	VARCHAR(32)
EMAIL	VARCHAR(128)
EMAILTYPE	VARCHAR(64)
WEBADDRESS	VARCHAR(128)
SECCODEID	CHAR(12)
REVENUE	NUMERIC(15,2)
EMPLOYEES	INTEGER
INDUSTRY	VARCHAR(64)
CREDITRATING	VARCHAR(10)
NOTES	VARCHAR(50)
STATUS	VARCHAR(64)
ACCOUNTMANAGERID	CHAR(12)
REGIONALMANAGERID	CHAR(12)
DIVISIONALMANAGERID	CHAR(12)
NATIONALACCOUNT	CHAR(1)
TARGETACCOUNT	CHAR(1)
TERRITORY	VARCHAR(64)
CREATEUSER	CHAR(12)
MODIFYUSER	CHAR(12)
CREATEDATE	DATE
MODIFYDATE	DATE
ACCOUNT_UC	VARCHAR(64)

HISTORY	
<u>HISTORYID</u>	CHAR(12)
ACTIVITYID	CHAR(12)
TYPE	INTEGER
ACCOUNTID	CHAR(12)
CONTACTID	CHAR(12)
OPPORTUNITYID	CHAR(12)
ACCOUNTNAME	VARCHAR(64)
CONTACTNAME	VARCHAR(64)
OPPORTUNITYNAME	VARCHAR(64)
PRIORITY	VARCHAR(64)
CATEGORY	VARCHAR(64)
STARTDATE	DATE
DURATION	INTEGER
DESCRIPTION	VARCHAR(64)
PROCESSID	CHAR(12)
PROCESSNODE	VARCHAR(16)
TIMELESS	CHAR(1)
RECURRING	CHAR(1)
ACTIVITYBASEDON	CHAR(12)
USERID	CHAR(12)
USERNAME	VARCHAR(64)
ORIGINALDATE	DATE
RESULT	VARCHAR(64)
RESULTCODE	VARCHAR(8)
CREATEDATE	DATE
CREATEUSER	CHAR(12)
MODIFYDATE	DATE
MODIFYUSER	CHAR(12)
COMPLETEDDATE	DATE
COMPLETEDUSER	CHAR(12)
NOTES	VARCHAR(255)
LONGNOTE	BLOB
ATTACHMENT	CHAR(1)

ENTITYID
ADDRESSID



USERNOTIFICATION	
NOTIFYID	CHAR(12)
ACTIVITYID	CHAR(12)
TOUSERID	CHAR(12)
FROMUSERID	CHAR(12)
NOTES	VARCHAR(128)
SENDDATE	DATE
TYPE	VARCHAR(64)

USERINFO	
USERID	CHAR(12)
TITLE	VARCHAR(32)
USERNAME	VARCHAR(64)
REGION	VARCHAR(32)
DIVISION	VARCHAR(32)
DEPARTMENT	VARCHAR(32)
EMAIL	VARCHAR(128)
PHONE	VARCHAR(32)
DIRECT	VARCHAR(32)
HOME	VARCHAR(32)
FAX	VARCHAR(32)
MOBILE	VARCHAR(32)
PINNUMBER	VARCHAR(32)
PAGERTERM	VARCHAR(32)
ADDRESSID	CHAR(12)
HOMEADDRESSID	CHAR(12)
ALTADDRESSID	CHAR(12)
LASTNAME	VARCHAR(32)
FIRSTNAME	VARCHAR(32)
MIDDLENAME	VARCHAR(32)
PREFIX	VARCHAR(16)
SUFFIX	VARCHAR(16)

SUBSCRIPTIONRULES	
RULEID	CHAR(12)
USERID	CHAR(12)
DESCRIPTION	VARCHAR(128)
DATA	BLOB
STATUS	CHAR(1)

USERVIEW	
USERVIEWID	CHAR(12)
USERID	CHAR(12)
NAME	VARCHAR(32)
DEFVIEW	CHAR(1)
DATA	BLOB

EVENT	
EVENTID	CHAR(12)
USERID	CHAR(12)
STARTDATE	DATE
ENDDATE	DATE
TYPE	VARCHAR(64)
DESCRIPTION	VARCHAR(128)
CREATEDATE	DATE
CREATEUSER	CHAR(12)
MODIFYDATE	DATE
MODIFYUSER	CHAR(12)

USERSUBSCRIPTION	
USERID	CHAR(12)
DATA	BLOB

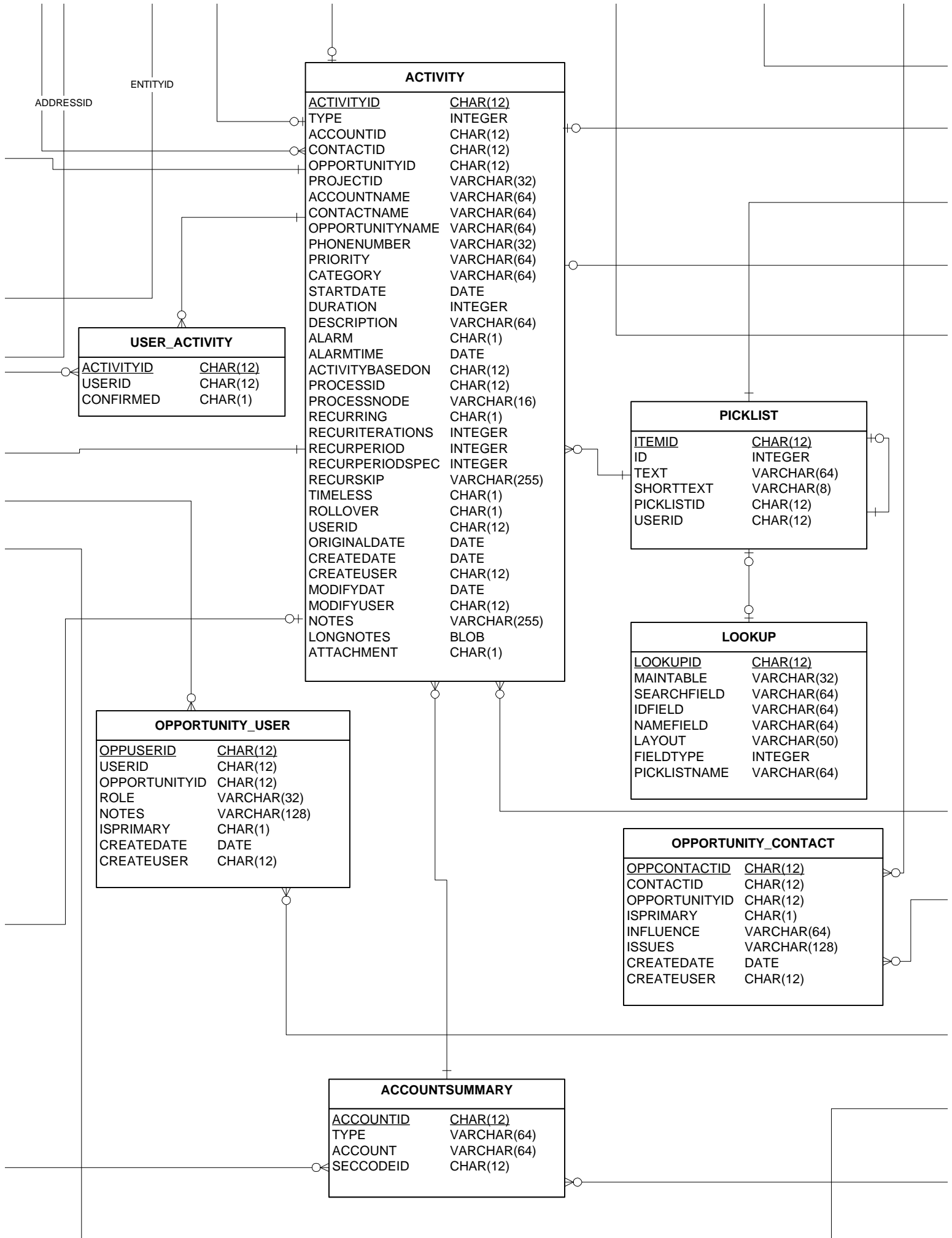
RESOURCELIST	
RESOURCEID	CHAR(12)
NAME	VARCHAR(64)
TYPE	VARCHAR(64)
COORDID	CHAR(12)
CREATEDATE	DATE
CREATEUSER	CHAR(12)

SECRIGHTS	
SECRIGHTSID	CHAR(12)
SECCODEID	CHAR(12)
ACCESSID	CHAR(12)
PROFILEID	CHAR(12)
RECORDACCESS	CHAR(1)
RANK	CHAR(1)
DEFAULTMEMBER	CHAR(1)

SECPROFILE	
PROFILEID	CHAR(12)
PROFILEDESCRIPTION	VARCHAR(64)
PROFILEDATA	VARCHAR(255)
PROFILETYPE	CHAR(1)

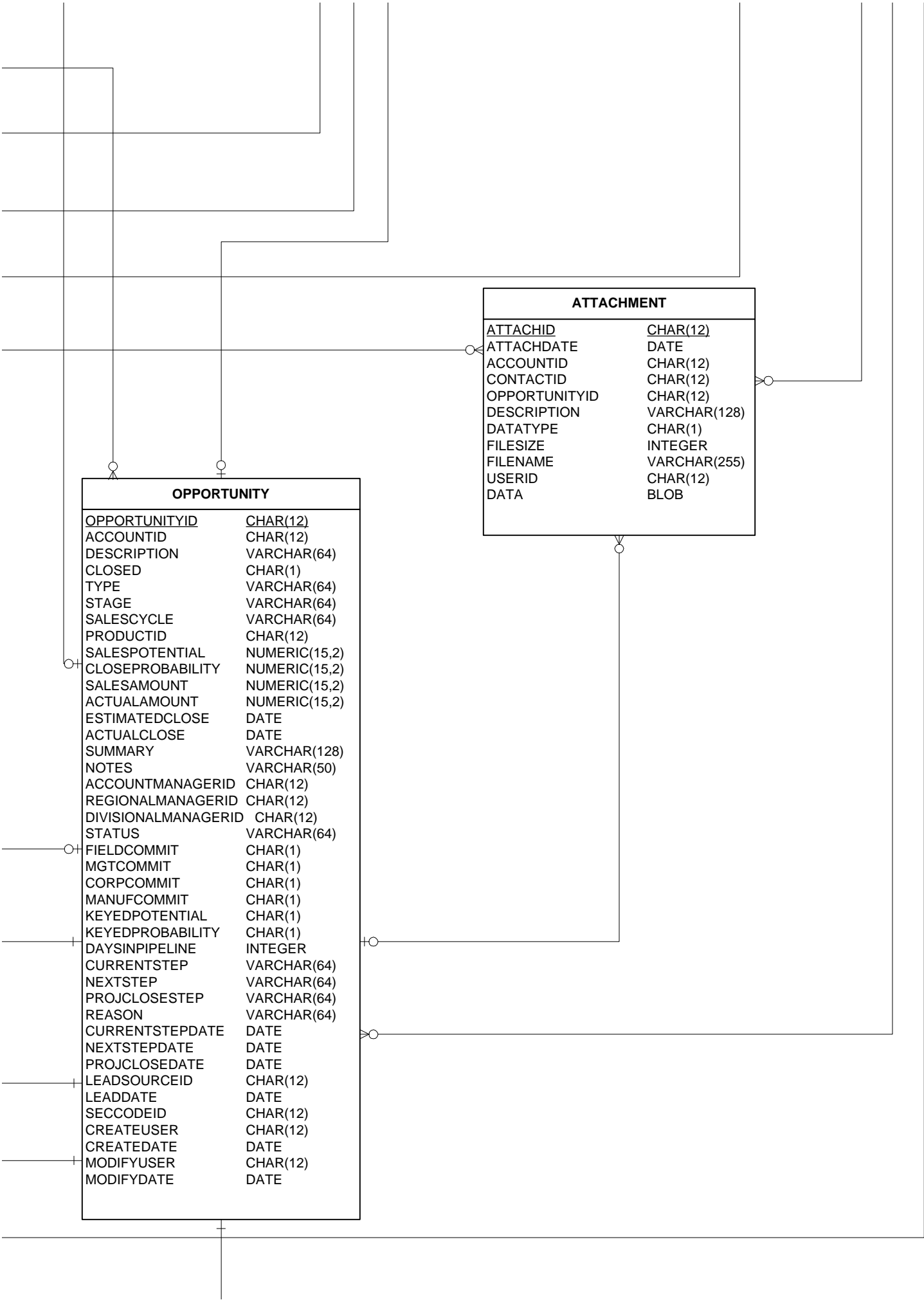
SECCODE	
SECCODEID	CHAR(12)
SECCODEDESC	VARCHAR(64)
SECCODETYPE	CHAR(1)

RESOURCESCHEDULE	
RSID	CHAR(12)
RESOURCEID	CHAR(12)
ACTIVITYID	CHAR(12)
STARTDATE	DATE
ENDDATE	DATE
USERID	CHAR(12)
DESCRIPTION	VARCHAR(128)
CREATEDATE	DATE
CREATEUSER	CHAR(12)
MODIFYDATE	DATE
MODIFYUSER	CHAR(12)



OPPORTUNITY	
OPPORTUNITYID	CHAR(12)
ACCOUNTID	CHAR(12)
DESCRIPTION	VARCHAR(64)
CLOSED	CHAR(1)
TYPE	VARCHAR(64)
STAGE	VARCHAR(64)
SALESCYCLE	VARCHAR(64)
PRODUCTID	CHAR(12)
SALESPOTENTIAL	NUMERIC(15,2)
CLOSEPROBABILITY	NUMERIC(15,2)
SALESAMOUNT	NUMERIC(15,2)
ACTUALAMOUNT	NUMERIC(15,2)
ESTIMATEDCLOSE	DATE
ACTUALCLOSE	DATE
SUMMARY	VARCHAR(128)
NOTES	VARCHAR(50)
ACCOUNTMANAGERID	CHAR(12)
REGIONALMANAGERID	CHAR(12)
DIVISIONALMANAGERID	CHAR(12)
STATUS	VARCHAR(64)
FIELDCOMMIT	CHAR(1)
MGTCOMMIT	CHAR(1)
CORPCOMMIT	CHAR(1)
MANUFCOMMIT	CHAR(1)
KEYEDPOTENTIAL	CHAR(1)
KEYEDPROBABILITY	CHAR(1)
DAYSINPIPELINE	INTEGER
CURRENTSTEP	VARCHAR(64)
NEXTSTEP	VARCHAR(64)
PROJCLOSESTEP	VARCHAR(64)
REASON	VARCHAR(64)
CURRENTSTEPDATE	DATE
NEXTSTEPDATE	DATE
PROJCLOSEDATE	DATE
LEADSOURCEID	CHAR(12)
LEADDATE	DATE
SECCODEID	CHAR(12)
CREATEUSER	CHAR(12)
CREATEDATE	DATE
MODIFYUSER	CHAR(12)
MODIFYDATE	DATE

ATTACHMENT	
ATTACHID	CHAR(12)
ATTACHDATE	DATE
ACCOUNTID	CHAR(12)
CONTACTID	CHAR(12)
OPPORTUNITYID	CHAR(12)
DESCRIPTION	VARCHAR(128)
DATATYPE	CHAR(1)
FILESIZE	INTEGER
FILENAME	VARCHAR(255)
USERID	CHAR(12)
DATA	BLOB



SYSTEMINFO	
<u>SYSTEMINFOID</u>	CHAR(12)
DBTYPE	INTEGER
PRIMARYSERVER	CHAR(12)
DATA	BLOB
DBVERSION	VARCHAR(5)

SITEOPTIONS	
<u>SITECODE</u>	CHAR(12)
LASTRNFILE	INTEGER
HOSTSERVER	CHAR(12)
DATA	BLOB

USERSECURITY	
<u>USERID</u>	CHAR(12)
USERCODE	VARCHAR(30)
USERPW	VARCHAR(20)
TYPE	CHAR(1)
ACCESSLEVEL	VARCHAR(20)
CLIENTLOGPTR	CHAR(12)
HOSTLOGPTR	CHAR(12)
LOGTHRESHOLD	SMALLINT
MANAGERID	CHAR(12)
DEFAULTSECCODEID	CHAR(12)
ADDMEMBERS	CHAR(1)
DELMEMBERS	CHAR(1)
CREATETEAMS	CHAR(1)
ISMANAGER	CHAR(1)
FUNCTIONS	VARCHAR(255)
ENABLED	CHAR(1)
PRIVATEACCOUNTID	CHAR(12)
PRIMARYSITE	CHAR(12)
LASTRNFILE	INTEGER
LASTSENDDATE	DATE
SECURITY	BLOB

SYNCSERVER	
<u>SITECODE</u>	CHAR(12)
SERVERPATH	VARCHAR(255)
MAINSERVER	CHAR(12)
DATA	BLOB

BRANCHOPTIONS	
<u>SITECODE</u>	CHAR(12)
COMPANY	VARCHAR(64)
DIVISION	VARCHAR(64)
ADDRESSID	CHAR(12)
SHIPPINGID	CHAR(12)
MAINPHONE	VARCHAR(32)
ALTERNATEPHONE	VARCHAR(32)
FAX	VARCHAR(32)
TOLLFREE	VARCHAR(32)
ATTACHMENTPATH	VARCHAR(255)
SALESLIBRARYPATH	VARCHAR(255)
DATA	BLOB

GM_PROFILE	
<u>GM_PROFILEID</u>	CHAR(12)
PROFILE	VARCHAR(30)
REFERENCE	VARCHAR(35)
FIELD1	VARCHAR(20)
FIELD2	VARCHAR(20)
FIELD3	VARCHAR(20)
FIELD4	VARCHAR(10)
FIELD5	VARCHAR(6)
FIELD6	VARCHAR(2)
FIELD7	VARCHAR(40)
FIELD8	VARCHAR(40)
NOTES	BLOB
CONTACTID	CHAR(12)
ACCOUNTID	CHAR(12)
CREATEUSER	CHAR(12)
CREATEDATE	DATE
MODIFYUSER	CHAR(12)
MODIFYDATE	DATE

RESYNCTABLEDEFS	
<u>TABLENAME</u>	VARCHAR(32)
KEYFIELD	VARCHAR(32)
SECONDARYFIELD	VARCHAR(32)
DATESTAMPFIELD	VARCHAR(32)
SECURE	CHAR(1)
OMNIDIRECTIONAL	CHAR(1)

SECTABLEDEFS	
<u>TABLENAME</u>	VARCHAR(32)
<u>FIELDNAME</u>	VARCHAR(32)
FIELDOFFSET	SMALLINT
FIELDINDEX	SMALLINT
SEQCODE	CHAR(1)
KEYFLAG	SMALLINT
SYNC	CHAR(1)
USERDEF	CHAR(1)

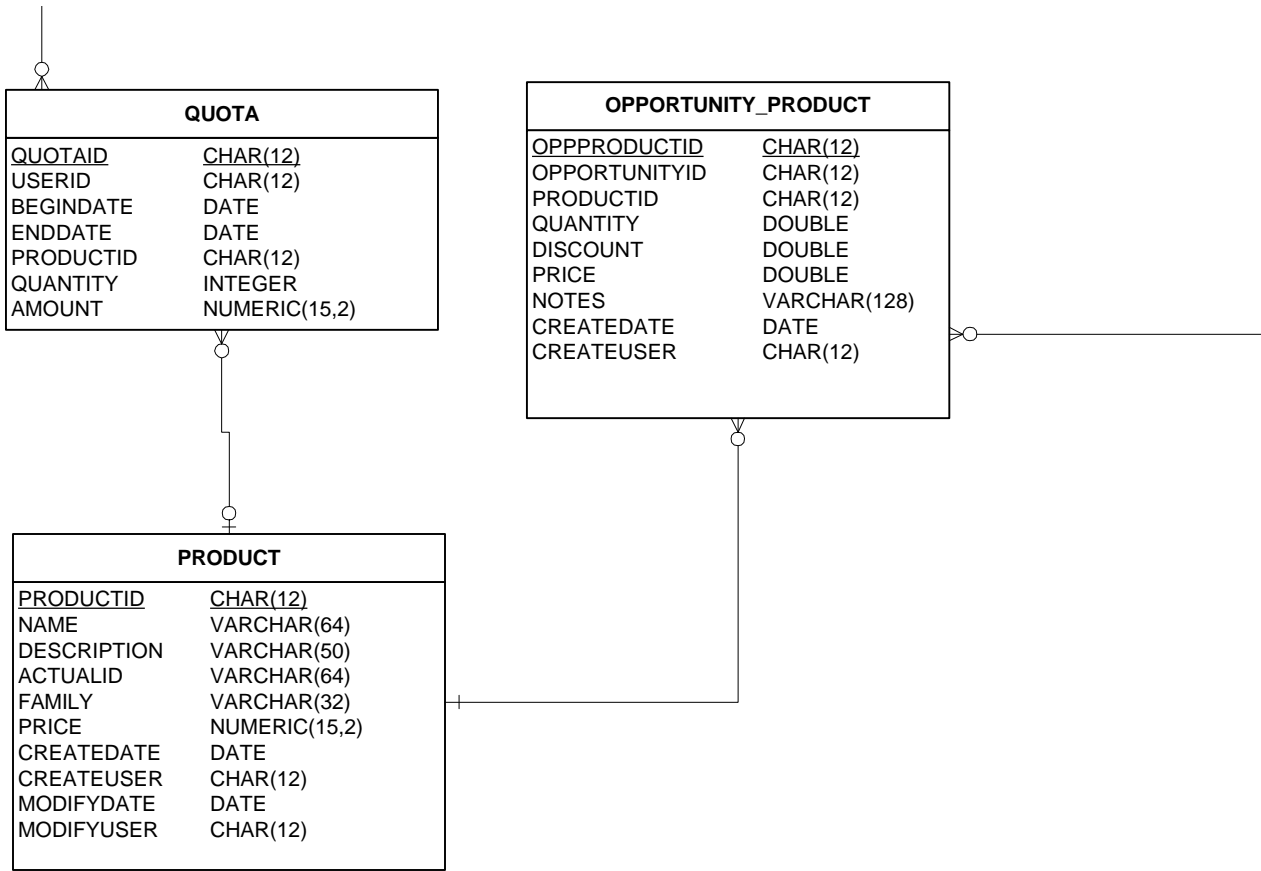
JOINDATA	
<u>JOINID</u>	CHAR(12)
FROMTABLE	VARCHAR(32)
FROMFIELD	VARCHAR(32)
TOTABLE	VARCHAR(32)
TOFIELD	VARCHAR(32)
SECONDARY	CHAR(1)
KEYGENERATOR	INTEGER
CASCADETYPE	CHAR(1)
USEBYDEFAULT	CHAR(1)
JOINTYPE	CHAR(1)

REMOTETASKS	
<u>TASKID</u>	CHAR(12)
TASKDESC	VARCHAR(64)
LASTRUN	DATE
DATA	BLOB

SECFUNCTIONS	
<u>ID</u>	INTEGER
NAME	VARCHAR(128)
PARENT	INTEGER
PROGRAM	INTEGER
DISPLAYNAME	VARCHAR(64)
RESOURCEID	VARCHAR(15)
ISPARENT	CHAR(1)
DESCRIPTION	VARCHAR(64)

WORKAREA	
ID1	CHAR(12)
ID2	CHAR(12)
ID3	CHAR(12)
DATE1	DATE
DATA	VARCHAR(255)

LICENSES	
<u>LICNUMBER</u>	VARCHAR(100)
ASSIGNEDTO	VARCHAR(100)
USERID	CHAR(12)



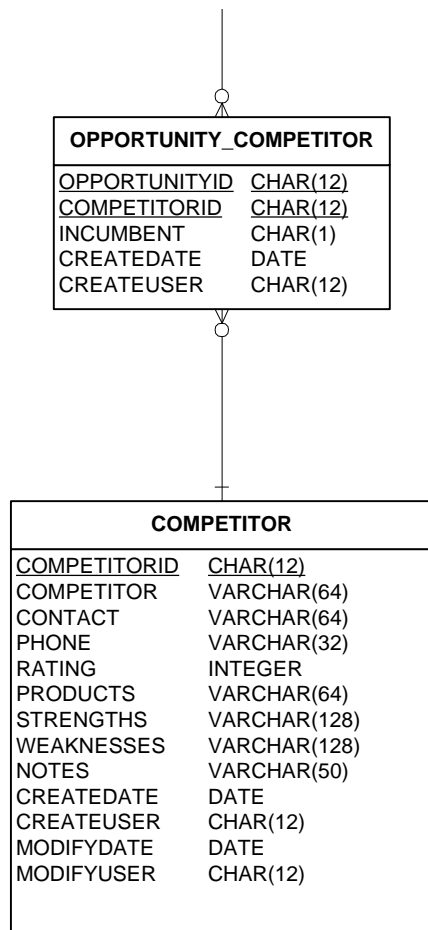
CALCULATEDFIELDDATA	
<u>CALCFIELDID</u>	CHAR(12)
NAME	VARCHAR(32)
DESCRIPTION	VARCHAR(128)
BASETABLE	VARCHAR(32)
CALCULATION	VARCHAR(50)
SECCODEID	CHAR(12)

LIBRARYDIRS	
<u>DIRID</u>	CHAR(12)
PARENTID	CHAR(12)
DIRNAME	VARCHAR(255)
FULLPATH	VARCHAR(255)
FOUND	CHAR(1)

PLUGIN	
<u>PLUGINID</u>	CHAR(12)
NAME	VARCHAR(64)
FAMILY	VARCHAR(64)
TYPE	INTEGER
USERID	CHAR(12)
CREATEDATE	DATE
MODIFIEDDATE	DATE
LOCKED	CHAR(1)
LOCKEDID	CHAR(12)
DATA	BLOB
VERSION	INTEGER
SYSTEM	CHAR(1)
ISPUBLIC	CHAR(1)
DESCRIPTION	VARCHAR(128)
DATA CODE	VARCHAR(24)
BASEDON	CHAR(12)

LIBRARYDOCS	
<u>FILEID</u>	CHAR(12)
<u>DIRID</u>	CHAR(12)
FILENAME	VARCHAR(255)
DESCRIPTION	VARCHAR(255)
FOUND	CHAR(1)
ABSTRACT	VARCHAR(50)
STATUS	CHAR(1)
REVISIONDATE	DATE
CREATEDATE	DATE
EXPIREDATE	DATE
FLAGS	INTEGER
FILESIZE	INTEGER





2.12 Database Schema

Notes

ENTITYID is used as a foreign key to hold *either* a CONTACTID, ACCOUNTID, USERID or OPPORTUNITYID. This column is found in the **ADDRESS** and **ADHOCGROUP** tables

CREATEUSER, MODIFYUSER, ACCOUNTMANAGERID, REGIONALMANAGERID, and DIVISIONALMANAGERID are used as foreign keys to reference a USERID in the **USERINFO** Table

SECCODEID is used in tables as a foreign key to hold SECCODEID from the SECCODE table or USERID from the USERINFO table.

